

VEHICLE REGISTRATION MARKS including marks offered for sale and purchased through DVLA's Sales Scheme must be displayed in accordance with The Road Vehicles (Display of Registration Marks) Regulations 2001 (obtainable from HMSO).

The Regulations specify the typeface, the size, colouring and the British Standard that number plates must conform to (the alternative provisions for motorcycles, tricycles and traditional plates are also shown below).

Normal requirements

All vehicles manufactured after 1.1.1973 must display number plates of reflex-reflecting material, white at the front and yellow at the rear, the characters must be black. In addition, the characters on number plates purchased from 1.9.2001 will need to conform to the following specifications.



Y54I BCY

**AB5I
DVL**

| | |
|---|-------|
| Character height | 79 mm |
| Character width (except the figure 1 or letter I) | 50 mm |
| Character stroke | 14 mm |
| Space between characters | 11 mm |
| Space between groups | 33 mm |
| Top, bottom and side margins (minimum) | 11 mm |
| Space between vertical lines | 19 mm |

Motorcycles and Tricycles

There are separate provisions for motorcycles and tricycles. Basically motorcycles registered after 1.9.2001 must only display a number plate at the rear of the vehicle. Motorcycles registered before 1.9.2001 can display a number plate at the front but are not required to.

Tricycles derived from four wheeled bodies i.e. saloon cars must meet the normal requirements above whereas tricycles derived from motorcycles must meet the requirements for motorcycles.

**Y54I
DVL**

| | |
|---|-------|
| Character height | 64 mm |
| Character width (except the figure 1 or letter I) | 44 mm |
| Character stroke | 10 mm |
| Space between characters | 10 mm |
| Space between groups | 30 mm |
| Top, bottom and side margins (minimum) | 11 mm |
| Space between vertical lines | 13 mm |

Traditional plates for vehicles constructed before 1 January 1973

Vehicles constructed before 1.1.1973 may display traditional style "black and white" plates i.e. white, silver or grey characters on a black plate.

Number plates fitted before 1 September 2001

Number plates fitted before 1.9.2001 must display characters that meet the dimensions shown in one of the two groups below:

| | Group 1 | Group 2 |
|---|---------|---------|
| Character height | 89 mm | 79 mm |
| Character width (except the figure 1 or letter I) | 64 mm | 57 mm |
| Character stroke | 16 mm | 14 mm |
| Space between characters | 13 mm | 11 mm |
| Space between groups | 38 mm | 33 mm |
| Side margins (minimum) | 13 mm | 11 mm |
| Top and bottom margins (minimum) | 13 mm | 11 mm |
| Space between vertical lines | 19 mm | 19 mm |



The Euro-symbol

Motorists may, if they wish, display the Euro symbol and GB national identifier on the number plate. This will dispense with the need for a separate GB sticker when travelling within the EU.

The symbol must conform to the EC Council Regulation 2411/98 which states the height must be a minimum of 98mm the width must be a minimum of 40mm, maximum of 50mm. The background must be of retro-reflecting blue with 12 retro-reflecting yellow stars at the top and the distinguishing sign of the Member State (GB) in retro-reflecting white or yellow. An example is shown below:



The Mandatory Typeface

All number plates made after 31.8.2001 must display the mandatory typeface. Number plates made prior to this date must be substantially the same. An example of the typeface is shown below.

**I23456789
ABCDEFGHIJ
KLMNOPQ
RSTUVWXYZ**

The British Standard

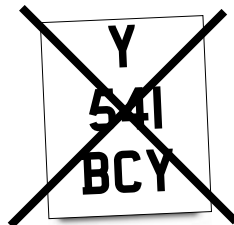
The British Standard sets out the physical characteristics of the number plate. This includes visibility, strength and reflectivity. The British Standard also requires each number plate to be permanently and legibly marked with the following information:-

1. The British Standard number (currently BS AU 145d)
2. The name, trade mark or other means of identification of the manufacturer or component supplier
3. Name and postcode of the supplying outlet

Offences

It is an offence to alter, rearrange or misrepresent letters or numbers in order to form names or words or in such a way that makes it difficult to read the registration number. Characters must not be moved from one block to the other e.g. AB51 DVL must not be displayed as AB5 1DVL or AB 51DVL. Vehicles with illegally displayed number plates may FAIL the MoT test. The police can also issue fixed penalty fines for illegally displayed number plates. Offenders are liable to a MAXIMUM FINE of £1,000 and in some cases the mark may be withdrawn.

For vehicles with new or replacement number plates fitted after 31.8.2001, "3-line" number plates are no longer permitted.



Further Information

DVLA has produced a booklet entitled INF46 "Registration Numbers And You" which provides further details. This is available for download from www.direct.gov.uk/motoring or by writing to Customer Enquiries Vehicles, DVLA, Swansea SA7 0EE.